



## Pilkington Decorative Glass Range

Pilkington Texture Glass  
Pilkington Oriel Collection  
Pilkington **Optifloat™** Opal



## Pilkington Texture Glass

For privacy, pure style or to allow more light into internal rooms, Pilkington Texture Glass gives you a fantastic range of attractive options.

The range offers no fewer than 18 different designs, from traditional to contemporary, no one offers a bigger choice of original designs.

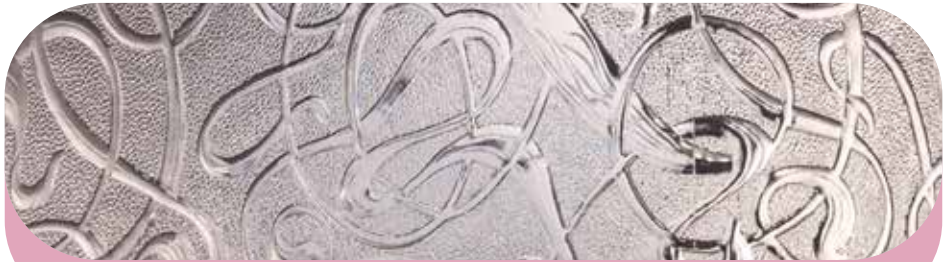
The advantages of Pilkington Texture Glass are easy to see too: it allows maximum light in while maintaining your chosen level of

privacy or obscurity, and also forms an attractive decorative feature itself. That's why our texture glass is the most trusted in the market.

With a wide range of original designs and the Pilkington Oriel etched glass range offering even more possibilities – all with the quality you would expect from one of the most recognised glass brands – there really is no better decorative glass choice for your home.



Choose from a wide range of genuine Pilkington designs



**Everglade™**

Privacy Level 5



**Pelerine™**

Privacy Level 5



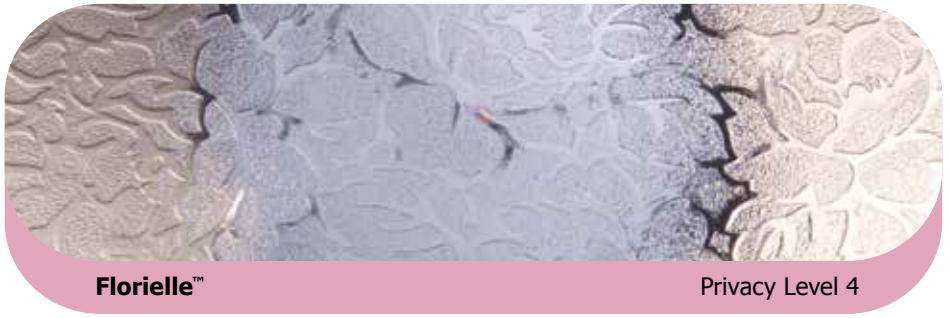
**Charcoal Sticks™**

Privacy Level 4



**Contora™**

Privacy Level 4



**Florielle™**

Privacy Level 4



**Mayflower™**

Privacy Level 4



**Oak™**

Privacy Level 4



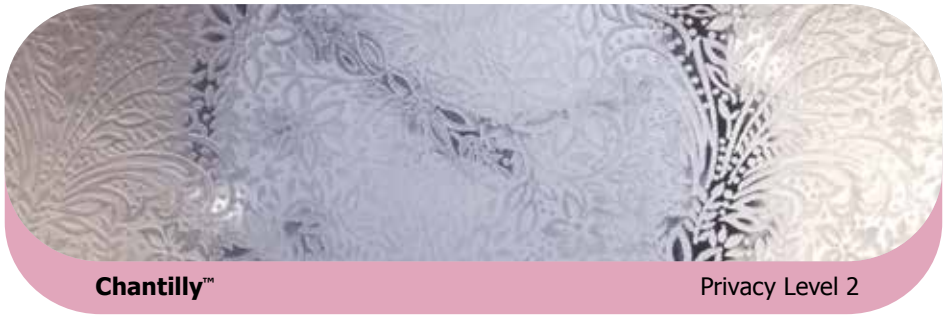
**Digital™**

Privacy Level 3



**Taffeta™**

Privacy Level 3



**Chantilly™**

Privacy Level 2



**Minster™**

Privacy Level 2



**Warwick™**

Privacy Level 1

For important information on the use of **Warwick™** please visit [pilkington.co.uk/textureglass](http://pilkington.co.uk/textureglass)

[Pilkington.co.uk/textureglass](http://Pilkington.co.uk/textureglass)



## Pilkington Oriel Collection – our premium etched range

This exciting range of stunning, high-end decorative etched glass designs is manufactured using either Pilkington **Optifloat™** or Pilkington **Optifloat™** Opal substrate to offer excellent light transmission in combination with various levels of privacy. The inspiring range is available in a variety of contemporary and traditional designs, each with a modern opaque appearance which is both functional and attractive.

All the designs in the Pilkington Oriel Collection have a matt appearance with a smooth and durable surface to provide a guaranteed uniform surface finish, ideally suited for use in a wide range of domestic and commercial applications:

- Kitchen & bathroom splashbacks
- Kitchen cupboards
- Displays and balustrades
- Domestic and commercial partition walling. For example ensembles, loft conversions and office screening
- Furniture
- Doors
- New and replacement windows
- Shower screens



**Cirque™**

Privacy Level 1



**Linear™**

Privacy Level 2

This design can be supplied in a horizontal or vertical direction. Orientation **must** be specified on order. For a horizontal effect the maximum height is restricted to 1320 mm due to manufacture orientation. If a vertical effect is required then the maximum height is limited to 2140 mm.



**Laurel™**

Privacy Level 2



**Canterbury™**

Privacy Level 2



**Burdock™**

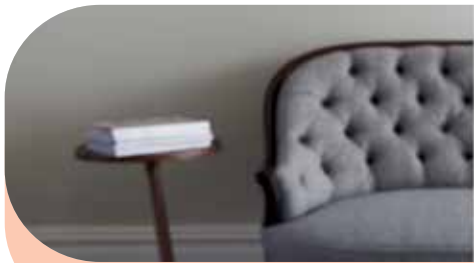
Privacy Level 3



**Saturn™**

Privacy Level 3

For a diagonal effect where the large circle runs from top left to bottom right the maximum height is 2140 mm. For a diagonal effect where the large circle runs bottom left to top right the maximum height is 1320 mm. Orientation **must** be specified on order.



Pilkington **Optifloat™** Opal



Privacy Level 5



**Canterbury™** Opal



Privacy Level 5



**Bay™** Opal



Privacy Level 5



# Pilkington Texture Glass Replacement Range

For customers who require replacement glass to match an existing design, a number of well-established designs are still available.



**Flemish™**

Privacy Level 2



**Sycamore™**

Privacy Level 2



**Autumn™**

Privacy Level 3



**Arctic™**

Privacy Level 4



**Stippolyte™**

Privacy Level 4



**Cotswold™**

Privacy Level 5

## Technical information

However you use our glass it is essential for safety and performance reasons that it is correctly specified and installed.

Common areas of impact risk, where it is recommended that impact safety glass classified by BS EN 12600 is installed, include:

- Glazed doors
- Glazing adjacent to doors
- Low-level glazing
- Bathroom areas
- Protective barriers
- Furniture and cabinets
- Office screen and partitions



## Five levels of privacy

- Pilkington Texture Glass and the Pilkington Oriel Collection offers privacy and style throughout the home
- Five levels of privacy are available, graded from 1 (least obscuration) to 5 (greatest obscuration)
- There are 12 original patterns in the main Pilkington Texture Glass range, including exclusive designs by Oliver Heath of Blustin Heath Design, a regular on the BBC's Home Front and Changing Rooms series
- All are available toughened or laminated for safety and security

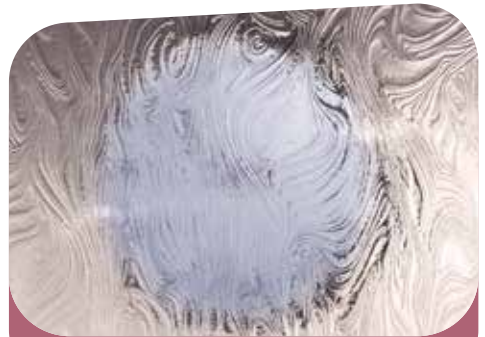
- All are suitable for double glazing
- The range is widely available from your local glass merchant or glazier



Privacy Level 1



Privacy Level 2



Privacy Level 3



Privacy Level 4



Privacy Level 5

This publication provides only a general description of the products. Further, more detailed, information may be obtained from your local supplier of Pilkington products. It is the responsibility of the user to ensure that the use of these products is appropriate for any particular application and that such use complies with all relevant legislation, standards, codes of practice and other requirements. To the fullest extent permitted by applicable laws, Nippon Sheet Glass Co. Ltd. and its subsidiary companies disclaim all liability for any error in or omission from this publication and for all consequences of relying on it.

The Pilkington Texture Glass design brand names are registered trademarks.

**Please note that imagery throughout is for illustration purposes only.  
Bathroom images supplied by Roland Homes.**



CE marking confirms that a product complies with its relevant harmonised European Norm. The CE marking label for each product, including declared values, can be found at [www.pilkington.com/CE](http://www.pilkington.com/CE)



**Made in the UK**

**NSG**  
GROUP

**Pilkington United Kingdom Ltd**

European Technical Centre, Hall Lane, Lathom, Nr Ormskirk, Lancashire L40 5UF

Telephone 01744 692000 Fax 01744 692880

[pilkington@respond.uk.com](mailto:pilkington@respond.uk.com)

[www.pilkington.co.uk](http://www.pilkington.co.uk)